

# EXPF SERIES OUTDOOR LIGHTS

EXPF-100W-50K  
HAZARDOUS LOCATION FLOOD/HIGHBAY LIGHTS

**WESTGATE**  
THE FUTURE IS HERE...AND IT'S QUITE BRIGHT!

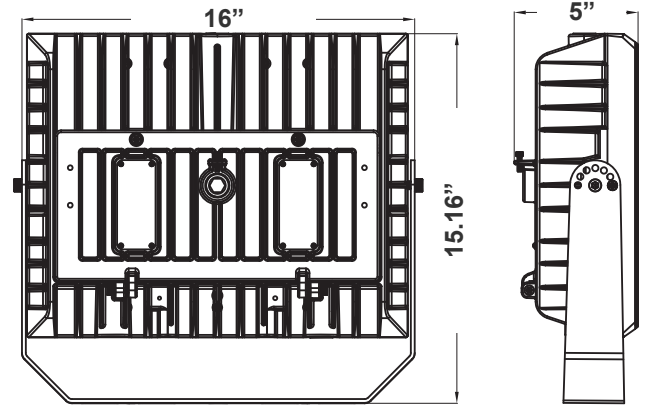


Customer Name: \_\_\_\_\_

Project Name: \_\_\_\_\_

Note: \_\_\_\_\_

Type: \_\_\_\_\_



15.16"(H) x 16"(W) x 5"(D)

Ideal for Stadium lighting, Sports fields, parking lots, docks, railway and container yards, Architectural lighting, Industrial and commercial exterior lighting, trade shows, exhibitions

## Features

- 7-year Warranty
- Lens: Clear Glass
- Aluminum Alloy Housing
- UL ANSI/UL 844, "Luminaires for Use in Hazardous (Classified) Locations.
- UL E503444 Class I, Division 2, Groups A, B, C and D, Luminaires for HazLoc

## Technical Specifications

### Electrical:

- Voltage: 120-277V AC 60Hz
- Wattage: 100W
- Power Factor: >0.9
- THD: ≤20%
- Efficacy: 140LPW

### Mechanical:

- Aluminum Alloy Housing With Power Coat Finish
- Gray Finish
- UL ANSI/UL 844, "Luminaires for Use in Hazardous (Classified) Locations.
- UL E503444 Class I, Division 2, Groups A, B, C and D, Luminaires for HazLoc
- Cord type: 2' SJTW 18/3 AWG Cable
- Operating Temperature: -22°F to 122°F
- IP Rating: IP68, Suitable for Wet Locations
- 7-year Warranty

### Lighting:

- Lens: Clear Glass
- LED: Bridgelux / SMD3030 (1W)
- Total lumens: 14000LM
- Color Temperatures: 5000K
- Color Rendering Index: CRI >70
- Rated Life: 70,000 Hrs
- Beam Angle: 140°×120°

### Applications:

- Warehouse, factory and workshops
- Petroleum and petrochemical area, and gas station
- Power, railway, ship port, public security, fire protection and other fields

- 180W | 20700LM | EXPF-180W-60K

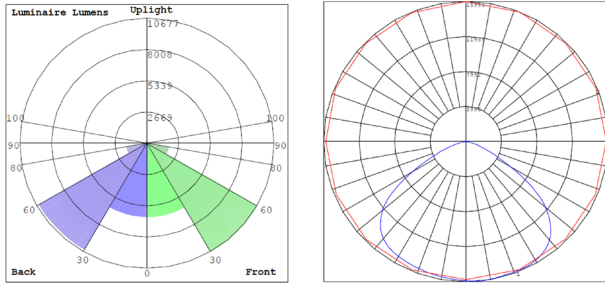


Phone: (877) 805-2252 | Fax: (877) 805-2252  
www.westgateimg.com |

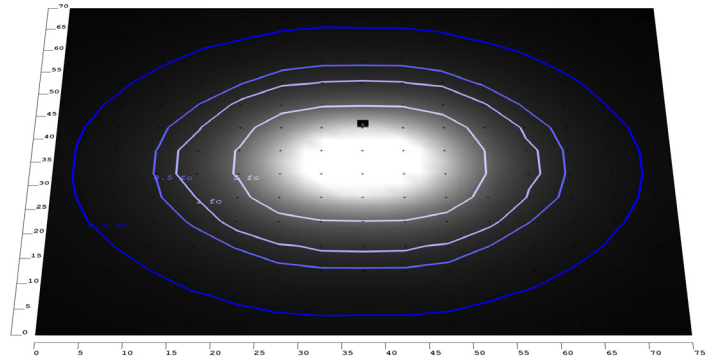


WG-20240325

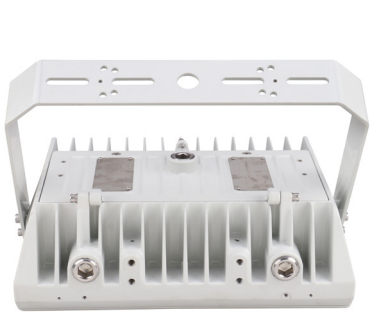
**Photometrics:** EXPF-100W-50K



BUG Rating: B5-U3-G3



**Other Views:**



Side View



Front View



Back View

**Performance Table:** EXPF-100W-50K

MODEL NO.	Wattage	Voltage	Lumens	Color Temp.	BUG Rating	LPW
EXPF-100W-50K	100W	120~277V	14000LM	5000K	B5-U3-G3	140

**Sample Ordering**

**Model**      **Watt**   **Color Temp.**

EXPF - 100W - 50K

